

Partner Presentation

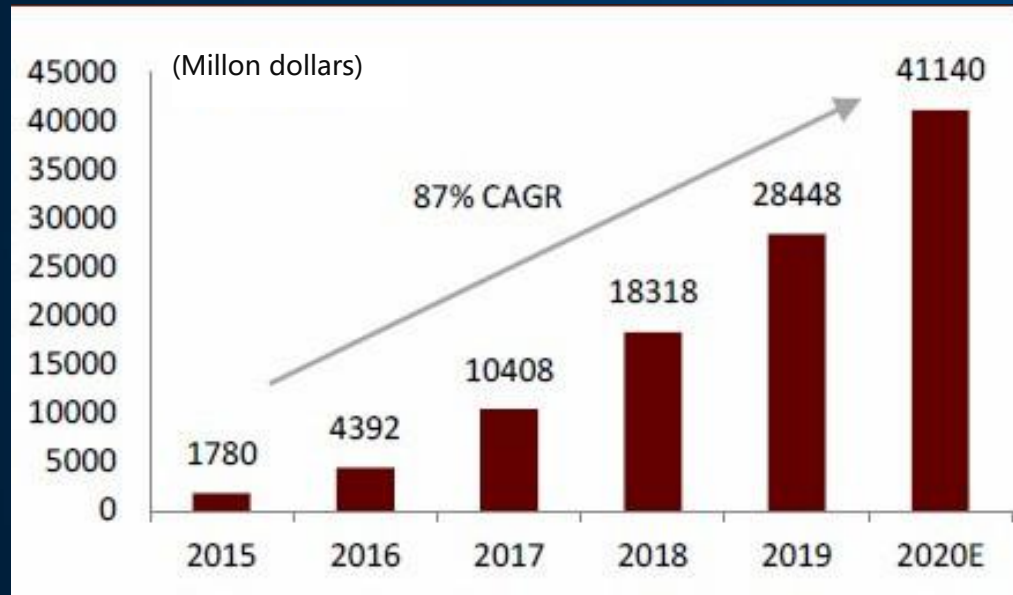
E098 Edge AI Box for Video Analytics

Xuewu Yuan, JWIPC Technology Development Co.,Ltd.

JWIPC

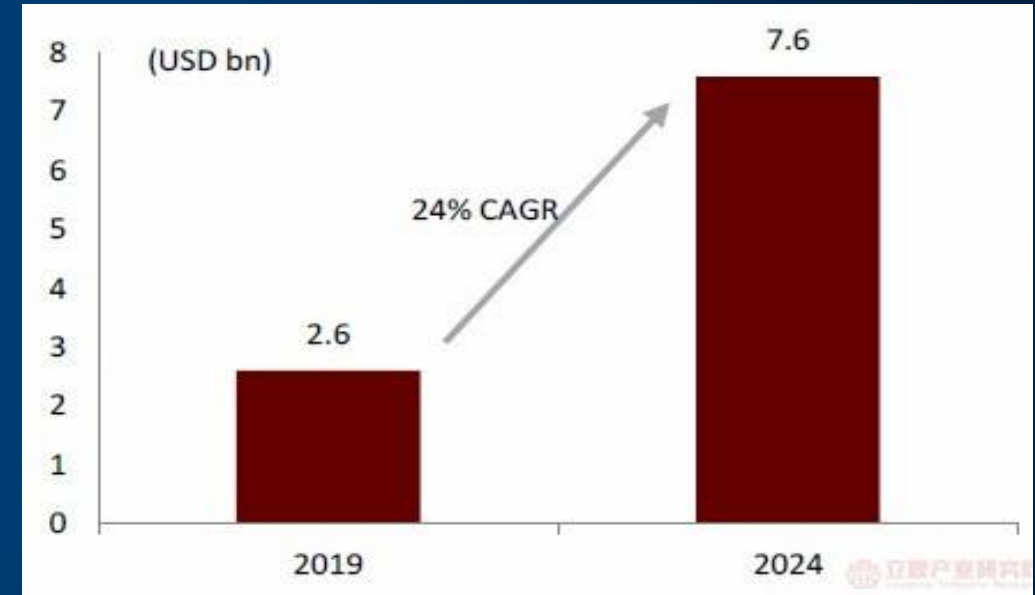
Edge Compute overview

Global edge computing market size



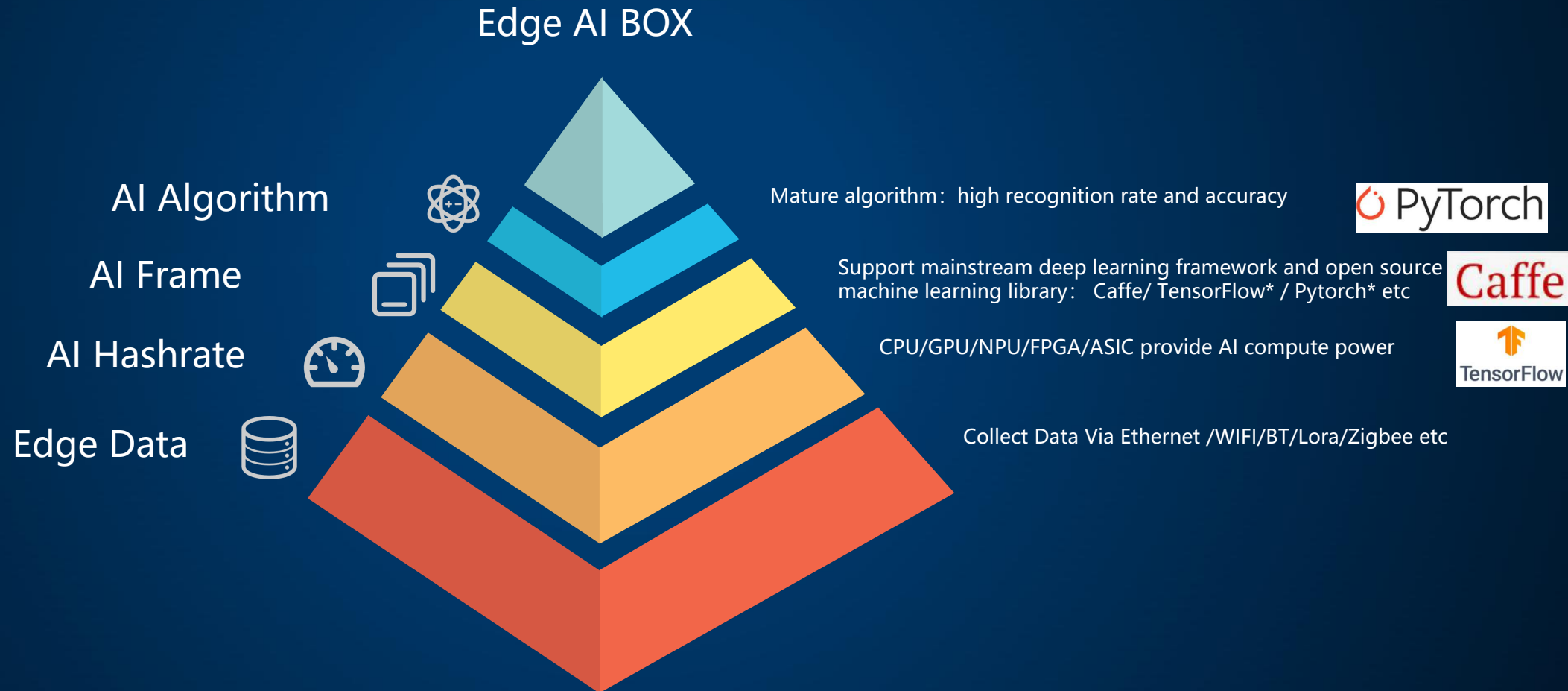
Source: Gartner

Global edge AI chip market size forecast



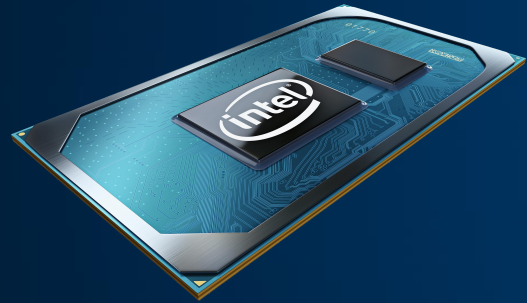
Source: ABI Research

Key elements of Edge AI box



11th gen Intel® Core™ Processor (Codename: Tiger Lake – UP3)

Platform highlights

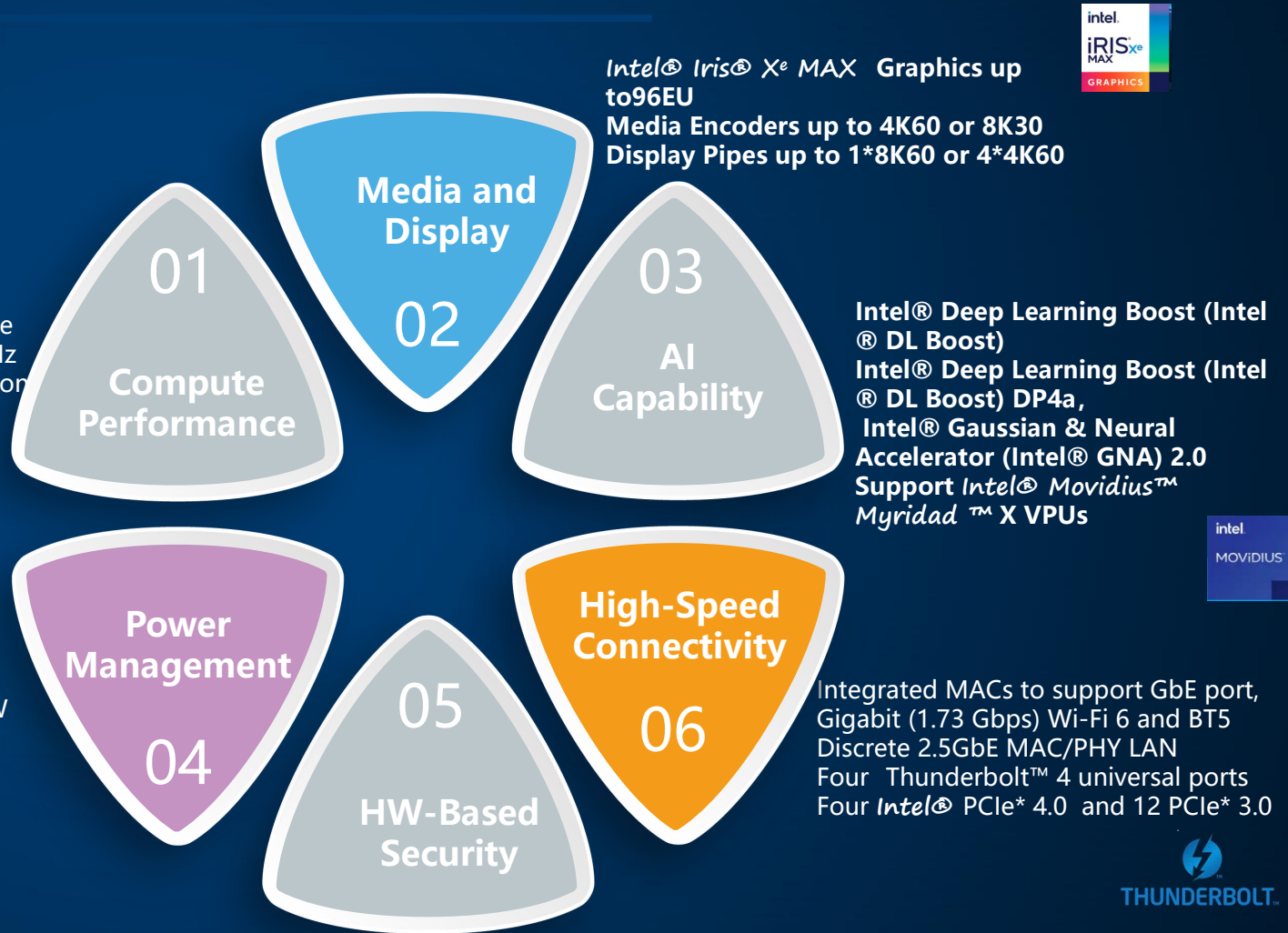


New Willow Cove architecture
up to 4 Cores/8 Threads/4.8GHz
Hardware-assisted virtualization
10nm SuperFin

11th gen Intel® Core™ Processor (Codename: Tiger Lake – UP3)



Scalable performance 7W-28W
Low Power audio DSP
FIVR and DVFS



For a smarter world

JWIPC

Product Profile

JWIPC E098 is an AI Box for Edge AI Box for Video Analytics, based on 11th gen Intel® Core™ Processor (Codename: Tiger Lake – UP3). This product can be widely used in different vertical industries, such as Public Safety and Security, Smart retail, Smart manufacturing, Enterprise Information, Smart medical and so on. The following are the main features of the product.





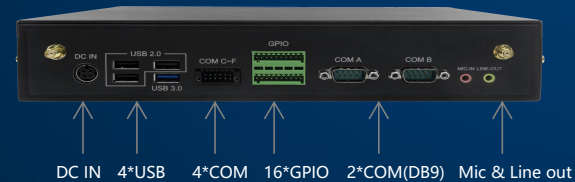
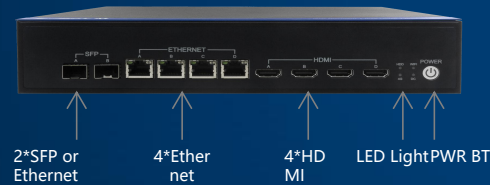
Product SPEC



Dimensions



Front/rear IO



Processor	Intel® Celeron® 11th gen Intel® Core™ Processor (Codename: Tiger Lake – UP3)
Memory	2 x DDR4 SO-DIMM
Storage	2 x M.2 2280, SATA
Display	4 x HDMI1.4b, support 2*2 or 1*4 splicing
Audio	3.5mm Line out(Green), 3.5mm Mic in(Pink)
Ethernet/SFP	2 x Gigabit SFP(Ethernet,optional)+4*Gigabit Ethernet(POE,optional)
Wireless Network	1 x M.2 2230, WIFI6 (optional) 1 x M.2 3042, 4G/5G (optional) 1 x MINI PCIE, LoRa/Zegbee/Bluetooth (optional)
AI accelerator	1 x M.2 2280, accelerator card, max 16 TOPS(optional); 1 x SO-DIMM, NVIDIA JETSON NX module (optional);
USB	IO: 2 x USB3.0 Type-A, 2 x USB2.0 Type-A;
COM	2*RS232/RS485(DB9)+4*RS232(Phoenix, 2*6pin);
TCM/TPM	OnBoard TCM ; TPM (via built-in USB interface)
Expansion	16 x GPIO(Phoenix, 2*10pin)
POWER	DC IN 12V ~19V
Dimension	268(L) x 200(W) x 53.7(H)mm
Operate System	WIN10/Linux
Environment Temperature	Operating Temperature 0~50°C , Storage Temperature -20~70°C
Environment Humidity	RH 10%~90% (non-condensing)

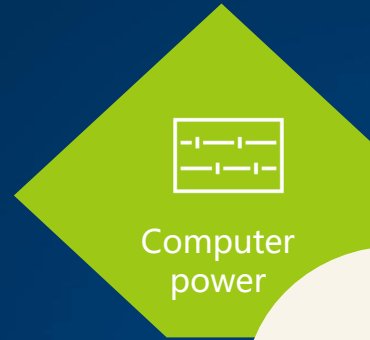
For a smarter world





Product Features

Entry level , Intel® Celeron® processors
Main force, Core i3/i5/i7processors

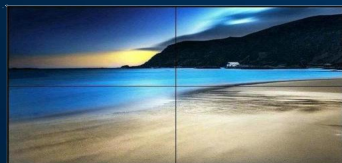


11th gen Intel® Core™ Processor (Codename: Tiger Lake – U). chip AI computing power
Support M.2 AI accelerator card
Support SODIMM GPU graphics card

Gigabit Ethernet or SFP optional
4G/5G, WIFI5/6 optional
LoRa, Zigbee, BT optional



memory encryption and Key locker
TPM (via built-in USB interface)
OnBoard TCM



4 x HDMI1.4b,
support 2*2 or 1*4 splicing screen
For a smarter world

2 x Gigabit SFP+4*Gigabit Ethernet(POE)
or 6*Gigabit Ethernet support IPC

6 x COM, 16 x GPIO
Support smoke alarm or other
peripheral signal input and output



Use Case

Smart store and restaurants

JWIPC Smart Restaurants

- ❑ Intelligent marketing, digital advertising, games before dinner
- ❑ Intelligent kitchen display system, dish delivery display system
- ❑ Intelligent layout to enhance dining experience;
- ❑ Intelligent cashier equipment, data statistical analysis;

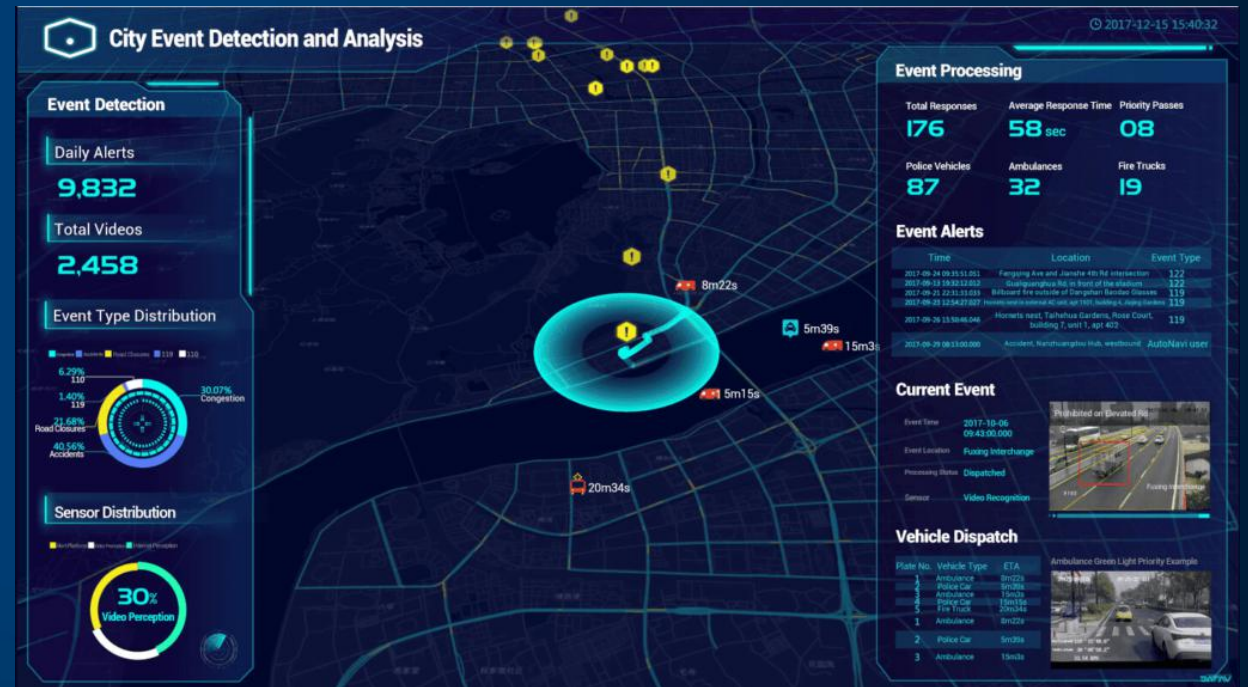


Use Case

Intelligent transportation

JWIPC Transportation industry

- ❑ Smart city traffic brain
- ❑ V2x solution
- ❑ Signal lamp control solution



Use Case

Safety Monitoring

JWIPC Security industry

- ❑ construction sites,
- ❑ warehousing and logistics,
- ❑ ports,
- ❑ community parks,
- ❑ campus scenic spots,
- ❑ petroleum and petrochemical,
- ❑ power industry,
- ❑ mines



Helmet identification



work clothes identification



oil leakage identification



smoke and flame identification

High Quality Service



R&D

01

120+ professional Engineers, Most perfect test equipment and lab, strictly verification process



MFG

02

20000m²;1000+ People;12SMT lines ; 8 ASS lines;;IMES tracking system; Professional equipments



Quality

03

nQuality control System Professional QA team ISO/OHSAS18001 certification ; CE, CB, FCC certification



Service

04

provide high quality after-sale service guarantee

JWIPC profile

JWIPC, founded in 2011, is headquartered in Futian District, Shenzhen, who is the national high-tech enterprises, JWIPC group has consumer products business group, internet of things business group, server business group, communication business group and manufacturing center.

As an Associate member of the IOT Solution Alliance, JWIPC is a solution provider, specializing in product R&D, and manufacture with large scale of procurement.

Today, JWIPC provides competitive quality products in different industries, such as OPS, digital signage, point of sales, industrial PC in IoT; AIO, Mini-PC, PC motherboard in consumer PC; server, storage, and network security in Data Center. With rich product portfolio, JWIPC provides end-to-end hardware solution to our customers including OEMs, SIs and ISV all over the world.



Wechat Official Account



JWIPC Official Website

The background features a complex, abstract pattern of thin, overlapping lines in shades of blue, purple, and gold, creating a sense of motion and depth. A solid blue rectangular area is positioned on the left side of the frame, serving as a backdrop for the text.

Thank you
for watching!

Contact Us

EO98 Edge AI Box for Video Analytics

- *Powerful and rich computing power options*
- *Powerful video processing*
- *Rich network processing functions*
- *AI computing power to realize the intelligentization of industry scenarios*
- *Ensure data privacy and security*

Create smart catering, smart transportation, security monitoring applications
Contact Us