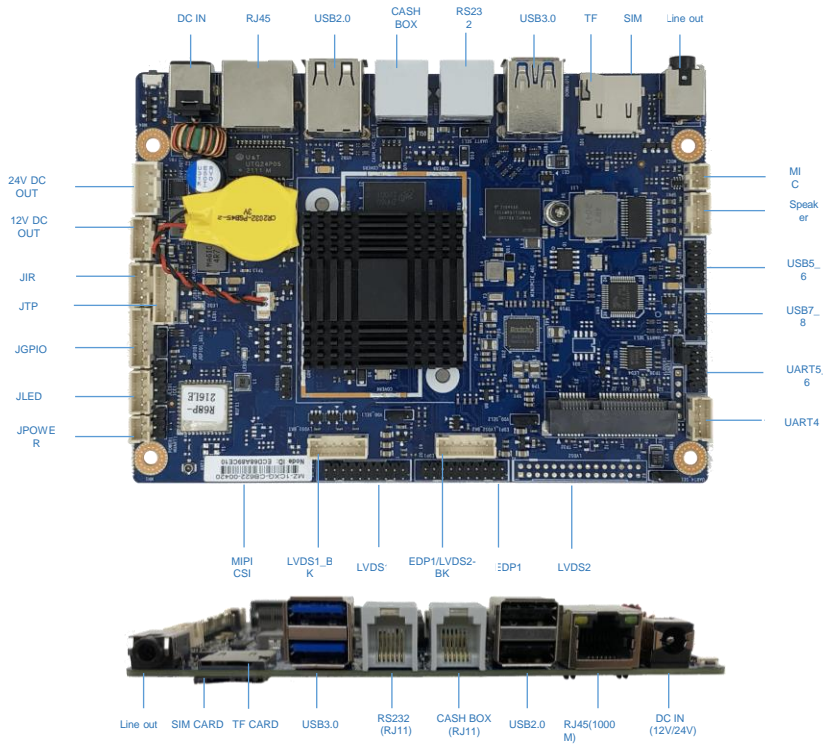


- RK3568, Quad-core Cortex-A55 up to 2.0GHz
- Onboard LPDDR4/4X Memory
- Onboard eMMC Storage
- Onboard WIFI+BT chipset
- Support 4G extension
- LVDS/eDP display output
- Support MIPI CSI Camera interface
- 8 x USB, 4 x COM
- Support 10/100/1000M LAN
- Support WOL, Watchdog, Timer Switch;
- Support Android 11

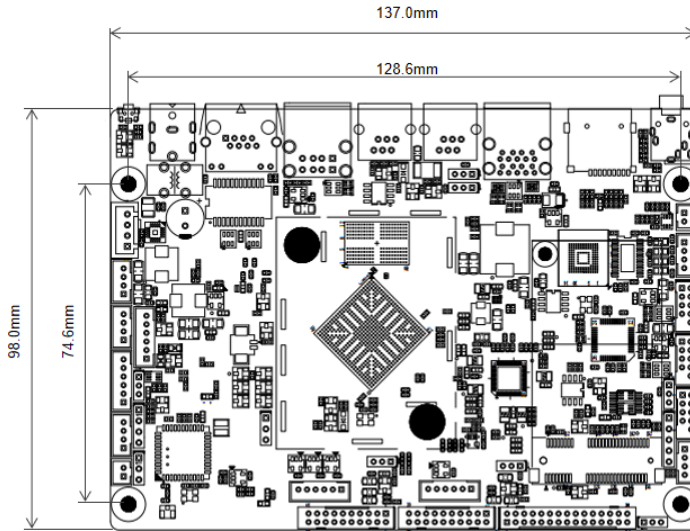
主板规格简介

Processor	CPU	RK3568 Quad-core Cortex-A55 up to 2.0GHz
Display	GPU	ARM Mali-G52
	Interface	1 x 20 Pin LVDS1, 2x 10PIN 2.0mm 1 x 30 Pin LVDS2, 2x 15PIN 2.0mm 1 x 20 Pin eDP1, 2x 10PIN 2.0mm Reserved interface, can expand EDP2 through daughter card, MIPI DSI display
Memory	Type	Option 2 GB/4 GB, LPDDR4 /4X
System	OS	Android 11、 Debian 10
Storage	Type	Onboard eMMC (Option 8GB/16GB/32GB)
Audio	PMU	RK809-5 integrated audio
	Interface	1 x 3.5mm Audio interface: Line out ; Amplifier: 5W/8Ω 1 x Speaker 4Pin, 1 x Mic 2Pin
Network	LAN	1 x 10/100/1000Mbps Lan
	Wireless	Onboard 2.4G WIFI+BT4.2/2.4G&5G WIFI+BT4.2 1 x Mini PCIE, support 4G extension
I/O	Camera	1 x MIPI-CSI, 40pin FPC
	USB	IO: 2 x USB3.0, 2 x USB2.0; Internal pins : 4x USB2.0
	COM	IO: 1 x RS232(RJ11); Internal pins: 3 x RS232/TTL optional
	Cash drawer	IO: 1 x RJ11 Cash drawer, 12V and 24V optional
	Extension	1 x TF slot 1 x Micro SIM slot 1x TP-I2C 1x GPIO pin , support one ADC and three GPIO 1 x IR pin 1 x LED pin 1 x POWER pin
Power	Input	IO: DC JACK 12V/24V compatible Internal pins: 1 x 24V DC OUT, 1 x 12V DC OUT
Size	L X H	137mm x 98mm
Environment	Operating Temperature	-5~50°C
	Operating Humidity	10%~90% Non-condensing
	Storage Temperature	-20~70°C
	Storage Humidity	5%~90% Non-condensing

产品图示



产品尺寸图



产品选型

Type	Description
R68P-A1	RK3568/2G/16G/6*USB2.0+2*USB3.0/4*RS232/LVDS1+LVDS2/LAN/WIFI+BT
R68P-B1	RK3568/2G/16G/6*USB2.0+2*USB3.0/2*RS232+2*TTL/EDP+LVDS1/LAN/WIFI+BT

产品说明，如有变更，恕不另行通知